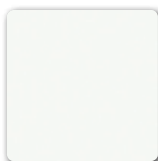


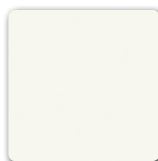
# ISAN REFERENCE COLOUR CHART



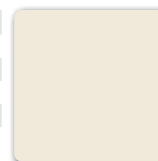
colour line: **RAL9016**  
 tint: snow-white  
 surface: -  
 extra charge: -  
 ordering code: 01



colour line: **RAL9010**  
 tint: white  
 surface: -  
 extra charge: -  
 ordering code: 02



colour line: **RAL9001**  
 tint: ivory  
 surface: -  
 extra charge: 10 %  
 ordering code: 04



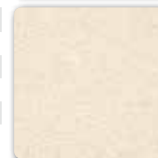
colour line: **RAL1015**  
 tint: jasmine  
 surface: -  
 extra charge: 10 %  
 ordering code: 12



colour line: **S09**  
 tint: snow-white  
 surface: texture  
 extra charge: 20 %  
 ordering code: 68



colour line: **S08**  
 tint: ivory  
 surface: texture  
 extra charge: 20 %  
 ordering code: 67



colour line: **S07**  
 tint: bamboo  
 surface: -  
 extra charge: 20 %  
 ordering code: 66



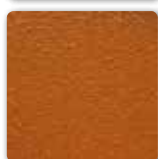
colour line: **S06**  
 tint: sunshine  
 surface: texture  
 extra charge: 20 %  
 ordering code: 65



colour line: **S04**  
 tint: gold  
 surface: metallic  
 extra charge: 30 %  
 ordering code: 63



colour line: **S18**  
 tint: curry  
 surface: texture  
 extra charge: 20 %  
 ordering code: 77



colour line: **S16**  
 tint: chilli  
 surface: -  
 extra charge: 20 %  
 ordering code: 75



colour line: **S17**  
 tint: firebrick  
 surface: texture  
 extra charge: 20 %  
 ordering code: 76



colour line: **S13**  
 tint: sandstone  
 surface: texture  
 extra charge: 20 %  
 ordering code: 72



colour line: **S14**  
 tint: rush  
 surface: texture  
 extra charge: 20 %  
 ordering code: 73



colour line: **RAL6019**  
 tint: pistachio  
 surface: -  
 extra charge: 10 %  
 ordering code: 45



colour line: **S12**  
 tint: ice  
 surface: texture  
 extra charge: 20 %  
 ordering code: 71



colour line: **S11**  
 tint: blue sky  
 surface: -  
 extra charge: 20 %  
 ordering code: 70



colour line: **S15**  
 tint: steel blue  
 surface: -  
 extra charge: 20 %  
 ordering code: 74



colour line: **S03**  
 tint: copper  
 surface: metallic  
 extra charge: 30 %  
 ordering code: 62



colour line: **S19**  
 tint: brass  
 surface: -  
 extra charge: 20 %  
 ordering code: 83



colour line: **S01**  
 tint: aluminium  
 surface: metallic  
 extra charge: 30 %  
 ordering code: 60



colour line: **S05**  
 tint: silver  
 surface: metallic  
 extra charge: 30 %  
 ordering code: 64



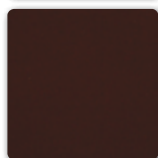
colour line: **RAL9006**  
 tint: grey  
 surface: -  
 extra charge: 10 %  
 ordering code: 20



colour line: **RAL7024**  
 tint: dark grey  
 surface: -  
 extra charge: 10 %  
 ordering code: 39



colour line: **RAL8017**  
 tint: chocolate  
 surface: -  
 extra charge: 10 %  
 ordering code: 46



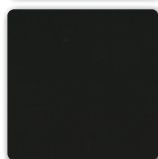
colour line: **S10**  
 tint: slate  
 surface: texture  
 extra charge: 20 %  
 ordering code: 69



colour line: **S02**  
 tint: anthracit  
 surface: metallic  
 extra charge: 30 %  
 ordering code: 61



colour line: **RAL9005**  
 tint: black  
 surface: -  
 extra charge: 10 %  
 ordering code: 19



• Print version of the colour card does not match the reality of the surface.

## SURFACE TREATMENT

**chrome**  
 ordering code: 80



**satın**  
 ordering code: 82



**inox**  
 ordering code: 81



Note: **satın[82]** same conditions like **chrome [80]**